

D.I.Y - Smart 3 Phase - Main Control Board for Garden / Farm Irrigation using KC868-H8B & KC868-COL-B Mini

Automatically water/irrigate your garden / Farm
On a desired day, desired time.

Automatically water /irrigate when soil is dry
- by checking soil moisture (Soil moisture sensor connected to KC868-COL B Mini.)

Automatically refill overhead water tank.
when tank is empty automatically switch ON the Water pump, fill the tank and switch OFF the water pump when the tank is full.
Condition can be applied : If there is not water in the well / sump tank the motor will not start . This will protect the motor.

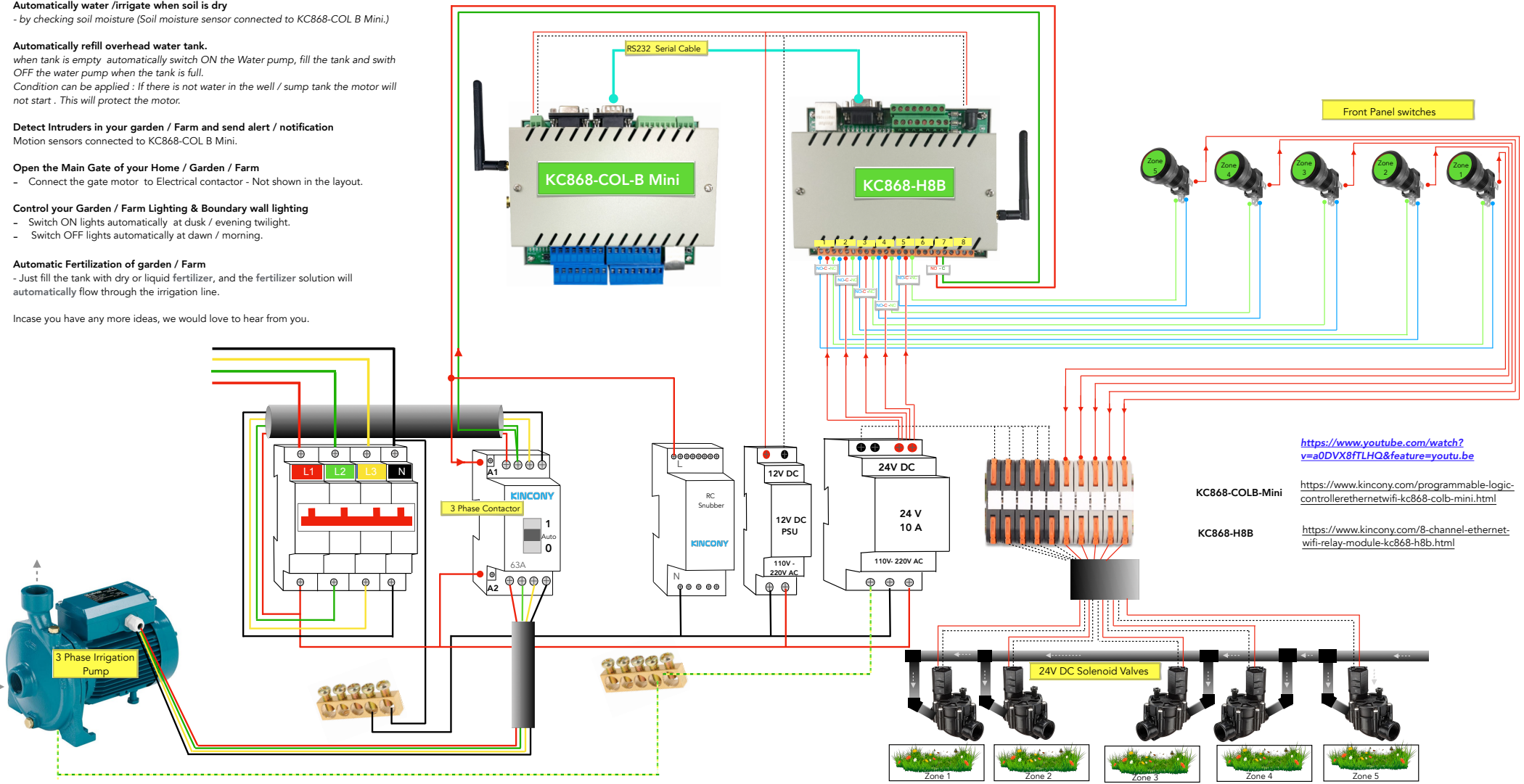
Detect Intruders in your garden / Farm and send alert / notification
Motion sensors connected to KC868-COL B Mini.

Open the Main Gate of your Home / Garden / Farm
- Connect the gate motor to Electrical contactor - Not shown in the layout.

Control your Garden / Farm Lighting & Boundary wall lighting
- Switch ON lights automatically at dusk / evening twilight.
- Switch OFF lights automatically at dawn / morning.

Automatic Fertilization of garden / Farm
- Just fill the tank with dry or liquid fertilizer, and the fertilizer solution will automatically flow through the irrigation line.

Incase you have any more ideas, we would love to hear from you.



Front Panel switches



<https://www.youtube.com/watch?v=a0DVX8fTLHQ&feature=youtu.be>
<https://www.kincony.com/programmable-logic-controllerethernetwifi-kc868-colb-mini.html>
<https://www.kincony.com/8-channel-ethernet-wifi-relay-module-kc868-h8b.html>

KC868-COLB-Mini

KC868-H8B

